



Marlborough Road, Chiswick, W4 4ET

£699,950

**WHITMAN & CO.**

SALES · LETTINGS · COMMERCIAL

- Two double bedrooms
- Off-street parking
- Sought after location

- Private west-facing garden
- Share of Freehold
- No onward chain

Tenure - Leasehold + Share of Freehold  
 Lease length - 985 Years remaining  
 Ground Rent - Peppercorn  
 Service Charge - TBC  
 Local authority - Hounslow  
 Council tax - Band D

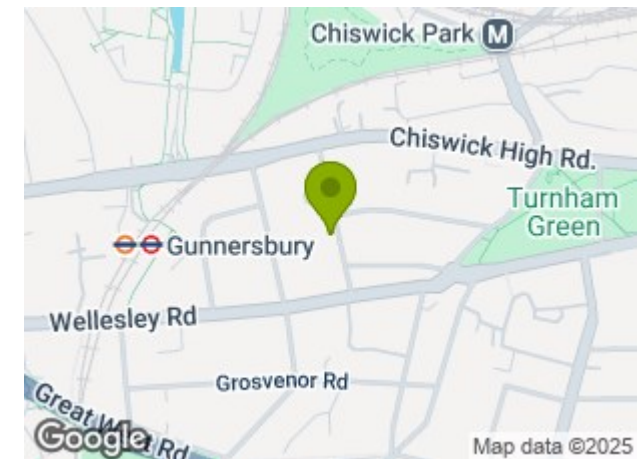
## THE PROPERTY

A light and spacious two-bedroom period conversion flat, featuring a private west-facing garden and allocated off-street parking.

The property offers two double bedrooms, a white bathroom suite, a separate shower room, a bright 15' reception room, and a 13' fully fitted kitchen. Additional benefits include a private 27' west-facing garden, a lease of over 950 years, and a share of the freehold.

Ideally located on a sought-after residential street running south off Chiswick High Road, with convenient access to a wide range of shops, bars, restaurants, and excellent tube links. Offered with no onward chain.

## SITUATION

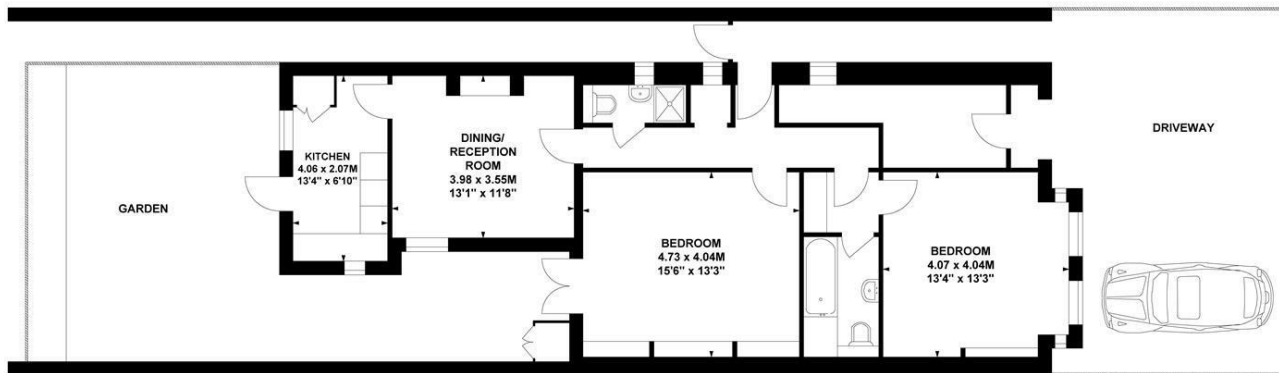


## Marlborough Road, W4

Approximate Gross Internal Area

83.46 sq m / 898 sq ft

Key :  
 CH - Ceiling Height



Ground Floor

Not to scale, for guidance only and must not be relied upon as a statement of fact.  
 All measurements and areas are approximate only

5-7 Turnham Green Terrace, Chiswick, London, W4 1RG

Tel 020 8747 8800

E-mail [sales@whitmanandco.com](mailto:sales@whitmanandco.com)

Website [www.whitmanandco.com](http://www.whitmanandco.com)



MISREPRESENTATION ACT 1967

Whitman & Co. for themselves and for the vendors give notice that these particulars do not constitute any part of, an offer of contract. All statements contained in these particulars are made without responsibility on the part of Whitman & Co. or the vendor. None of the statements contained in these particulars is to be relied upon as statements or representations of facts. Any intending purchaser must satisfy himself by inspection or otherwise as to the correctness of each of the statements contained in these particulars. The vendor does not make or give, and neither Whitman & Co. or any person in their employment has any authority to make or give, any representation or warranty whatever in relation to the property.